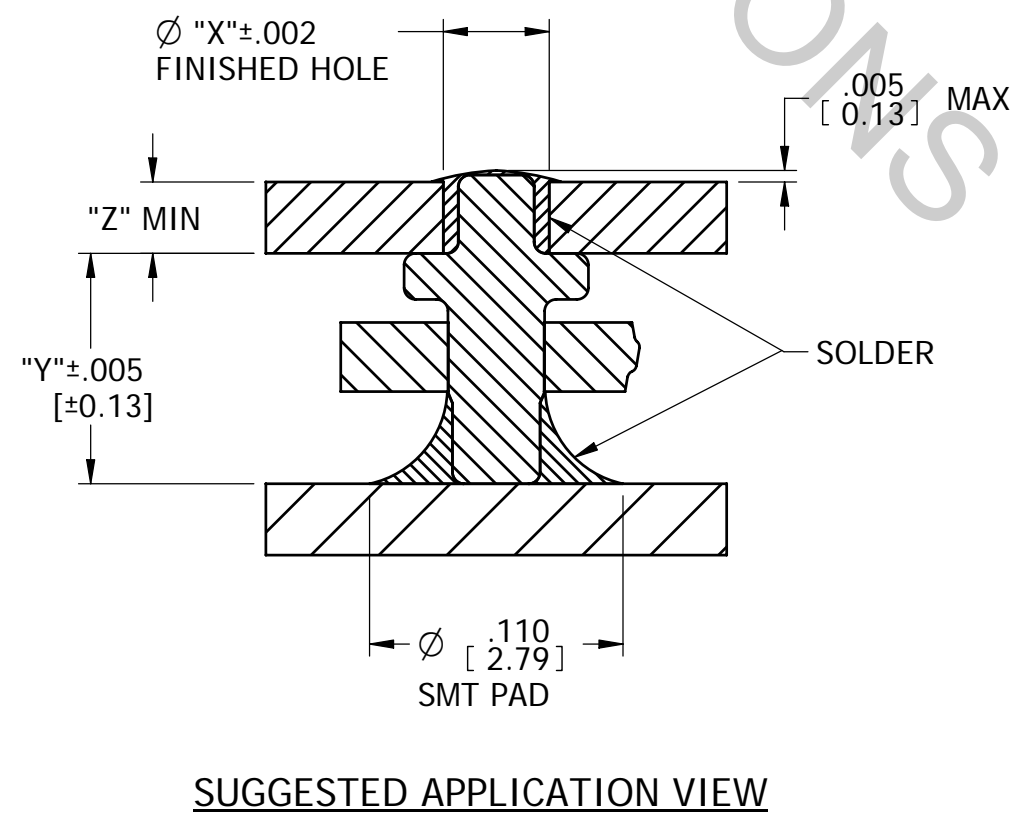
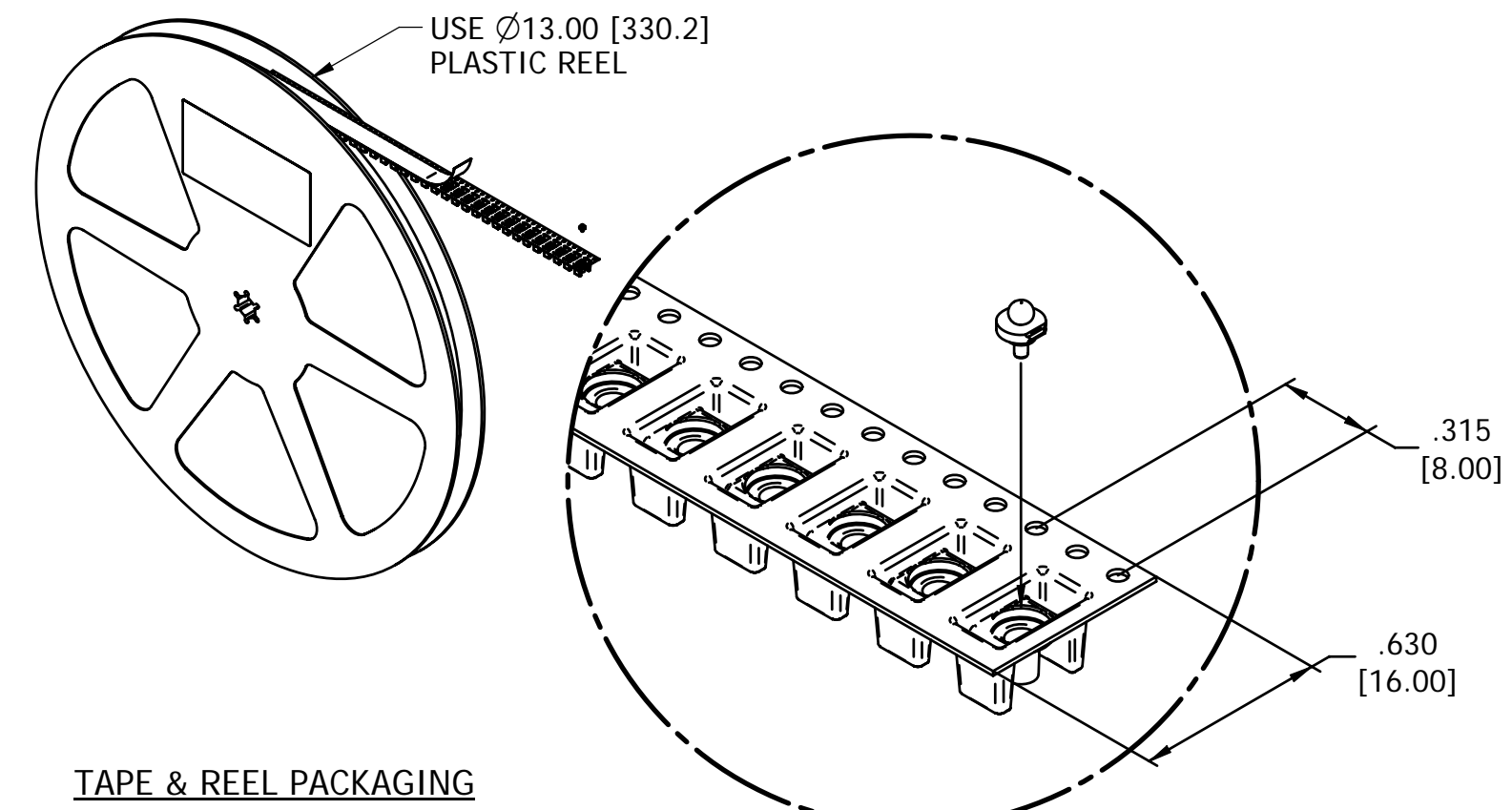
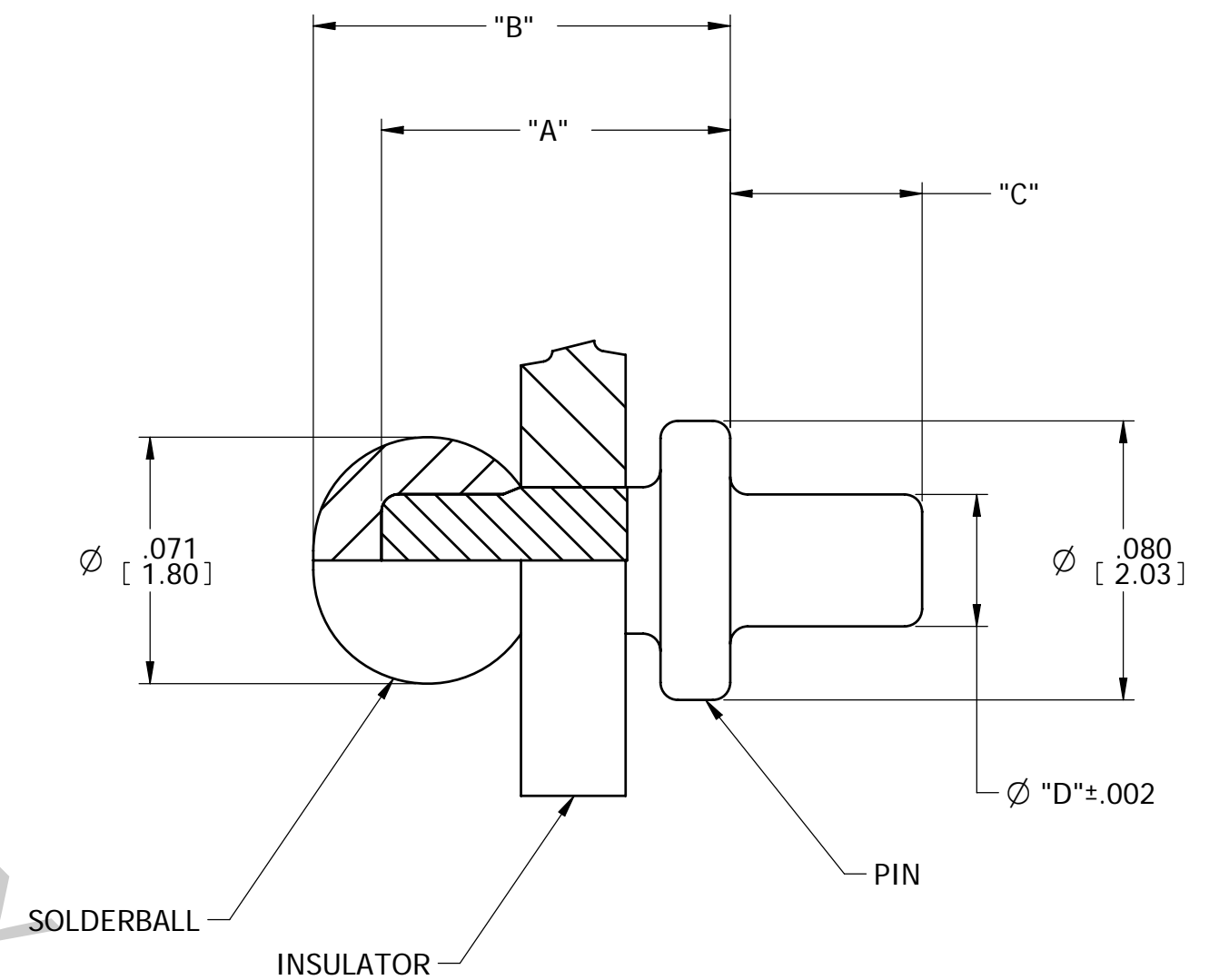
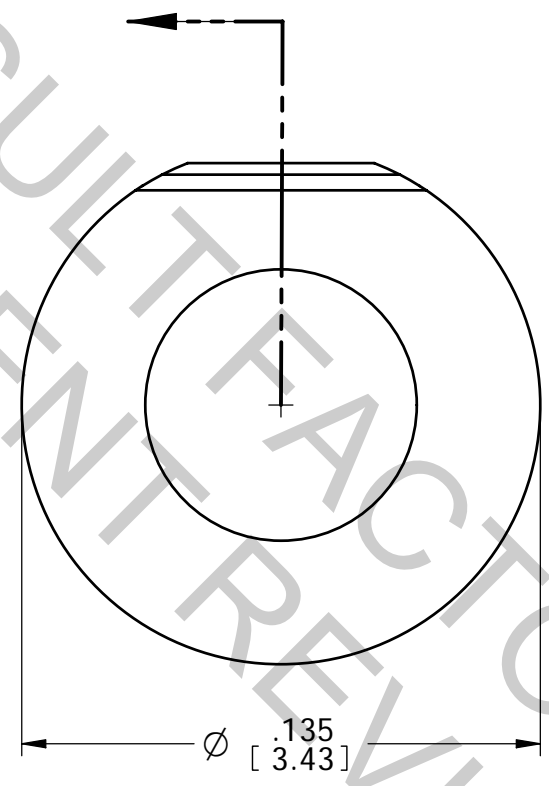
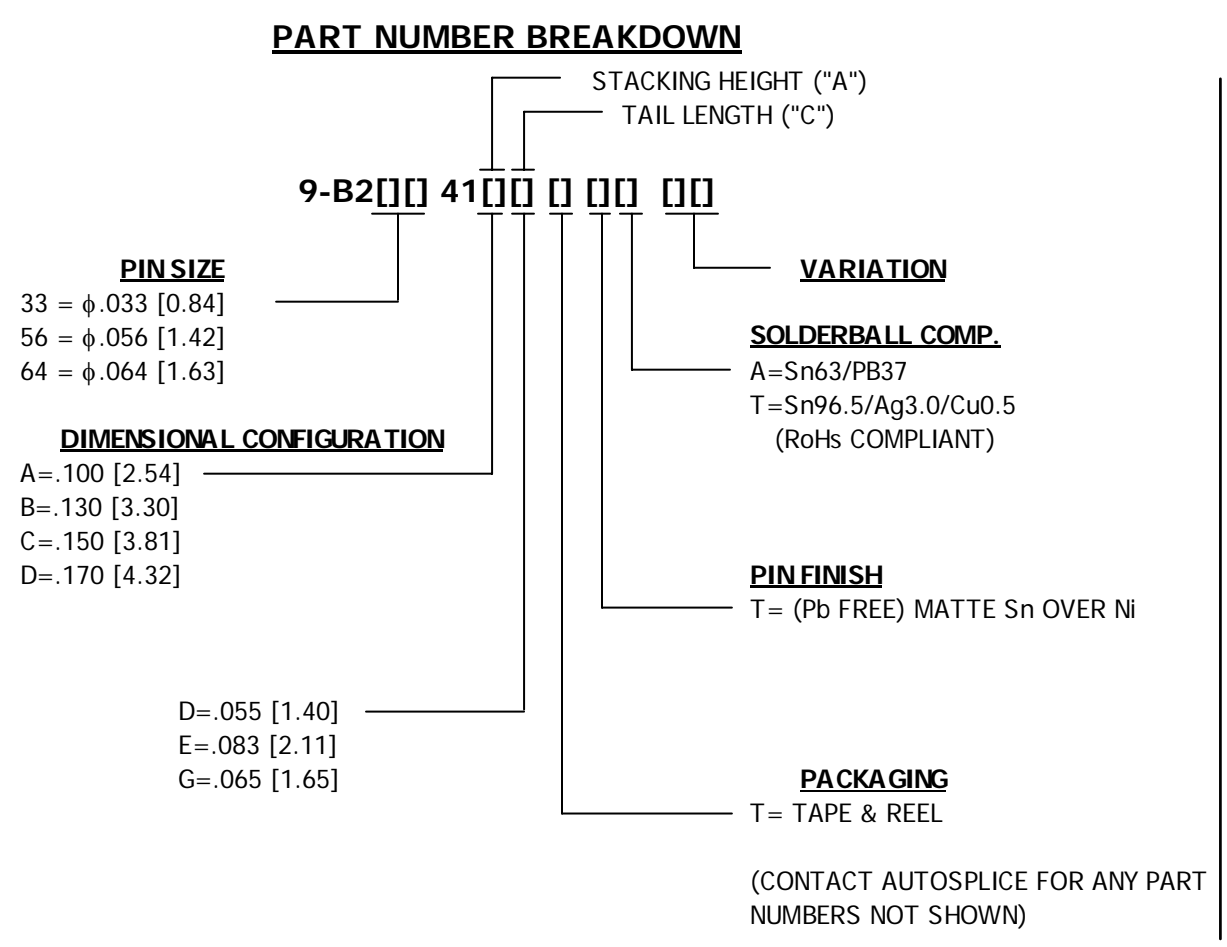


NOTES: UNLESS OTHERWISE SPECIFIED

1. INTERPRET DRAWING IN ACCORDANCE WITH ASME Y14.5M -1994.
2. PARTS TO BE PACKAGED IN TAPE & REEL PER EIA STD-481.
3. MATERIALS: PIN= COPPER; INSULATOR= FR-4 GLASS EPOXY; SOLDERBALL MATERIAL= SnPb (BLACK) & Pb FREE (BLUE).
4. RECOMMENDED PICK HEIGHT: .025 [0.64] FROM TOP OF POCKET.
5. SOLDERABILITY PER IPC/EIA J-STD-002, TEST A, CATEGORY 3.
6. PREPROCESSED COPPER PIN TO BE PLATED WITH .000300"-.000500" [0.0076-0.0127] THICK MATTE Sn (Pb FREE) OVER NI .000100"-.000200" [0.0025-0.0051], INSPECTED PER AUTOSPlice WORK INSTRUCTION 4.10-14 REV 'A'.

PART NO.	"A"	"B"	"C"	"D"	"X"	"Y"	"Z"	QTY/REEL
9-B23341AD[][][]	.100 [2.54]	.120±.007 [3.05±0.18]	.055±.003 [1.40±0.05]	.033 [0.84]	.041 [1.04]	.105 [2.67]	.062 [1.57]	1,800±15%
9-B23341DE[][][]	.170 [4.32]	.190±.007 [4.83±0.18]	.083±.003 [2.11±0.05]	.033 [0.84]	.041 [1.04]	.175 [4.44]	.090 [2.29]	1100±15%
9-B23341CD[][][]	.150 [3.81]	.170±.007 [4.32±0.18]	.055±.003 [1.40±0.05]	.033 [0.84]	.041 [1.04]	.155 [3.94]	.062 [1.57]	1,300±15%
9-B23341BG[][][]	.130 [3.30]	.150±.007 [3.81±0.18]	.065±.003 [1.65±0.05]	.033 [0.84]	.041 [1.04]	.135 [3.43]	.072 [1.83]	1,300±15%
9-B26441DE[][][]	.170 [4.32]	.190±.007 [4.83±0.18]	.083±.003 [2.11±0.05]	.064 [1.63]	.072 [1.83]	.175 [4.44]	.090 [2.29]	1100±15%

REV	REVISION RECORD	ECN	BY	APVD	DATE
A	INITIAL RELEASE	505124	HR	PVB	09/24/07
B	CHANGE "HOLE SIZE" TO "PIN SIZE"	505208	HR	PVB	12/12/07
C	CHANGE PLATING NOTE PER EWR106140	505527	HR	PVB	9/4/08
D	CHANGES PER EWR 106321	505665	DJA	HR	1/13/2009
E	CHANGES PER EWR 106380	505699	DJA	HR	2/18/2009
F	CHG TAPE QTY FOR 9-B2[][]41DE[][][]	505718	HR	PVB	3/13/2009
G	ADDED NOTE 6 PER EWR 106480	505762	RJB	PVB	4/24/2009



CUSTOMER DRAWING

<p>The drawing and the information set forth hereon are the property of AutosplICE, Inc. and are to be held in trust and confidence. Publication, disclosure, or use for any purpose not expressly authorizing in writing by AutosplICE, Inc. is prohibited.</p>	<p>TOLERANCES UNLESS OTHERWISE SPECIFIED DIMENSIONS IN INCHES (mm)</p> <p>DECIMAL: .XX = ±.01 [X.X] = ±[0.3] XXX = ±.005 [X.XX] = ±[0.13]</p> <p>ANGULAR: ± 1°</p>	<p>autosplICE</p> <p>AutosplICE, Inc. 10121 Barnes Canyon Rd. San Diego, CA 92121-2725 656-535-0077</p>	<p>THIRD ANGLE PROJECTION</p> <p>DRAWN BY: HR ENGINEERED BY: H REYNOLDS</p>	<p>DATE: 9/24/07 DATE: 9/24/07</p>	
	<p>TITLE: MIDI, SOLDERBALL PIN</p>				
	<p>SIZE: C SCALE: CAD NO--C9-B2[][]41[][][][][][]_g.dft</p>	<p>FCM NO: OAE89</p>	<p>DRAWING NUMBER: C9-B2[][]41[][][][][][]</p>	<p>REVISION: G</p>	<p>SHEET 1 OF 1</p>
	<p>MODEL NO: 9b23841[][][][][][]_asm</p>				